



DATA EXPLORATION SERIES



University Analytics
& Institutional Research

Data Exploration Series:
Focus on Fall 2024 Student Census

AGENDA & PRESENTERS

Christopher Cherry

IT Training & Support Specialist

Kevin Lundeberg

Data Analyst, Enrollment Management

Rico Silva

Program Manager

Daisy Esquivel

Data Analyst

Ashley Hurand

Assistant Director, University Analytics & Institutional Research

- Introduction
- Fall Census Overview
- Fall Census Highlights
- Dashboard Tour
- Q&A



WHO WE ARE AND WHAT WE DO

UAIR is committed to providing data that empowers campus decision makers, informs policy and practice, and tells the Arizona story.

Our Services

- Enterprise Data Warehouse
- UAccess Analytics & Reporting
- External Reporting & Rankings
- Interactive Fact Book
- Customer Experience & Support
- Data Science
- System Management



UAIR DATA PATH

Follow the data lifecycle and how we deliver it to you

Data Sources

Campus creates data using the following transaction systems:

UAccess | Employee

UAccess | Financials

UAccess | Research

UAccess | Student

Additional Sources

Data Ingest ELT/ETL Process

- 1 Validate
- 2 Clean
- 3 Transform
- 4 Aggregate
- 5 Load

 IBM Datastage

Enterprise Data Warehouse

Subject Areas

Data Tables

Data

Data

Data

Data Tables

Data

Data


Data

Data Tables

Data

Data

Data

 **Data Warehouse**
(Oracle 19c)

 **Data Lake**
(AWS Lake Formation)

UAIR Services


Campus interacts with university data through:

UAccess Analytics

External Reporting

Interactive Fact Book

Training & Data Literacy

 **Oracle Analytics Server**
(Verion 7.0)

 **+ a b | e a u**

Data Governance, Management, and Security Architecture & Policies

40+

Data Analysts, BI Developers, Communication Professionals, Data Engineers, Developers, and more bringing this data to you

UAIR Teams and Leads



Administrative Data - Eddie Caratachea



Customer Experience & Support - Ashley Hurand



Data Engineering - Shiva Chidara



Student Data - Mark Ray & Ashley Hurand



Systems Architecture & Security - Doug Hester



Institutional Reporting

Get in touch!

- uair.arizona.edu
- UAIR Support Hub
- uair@email.arizona.edu
- UAIR's Newsletter
- Data Request Form



University Analytics
& Institutional Research

WHO'S HERE

123 Registered

56% Have never attended a DES

20 Questions asked



WHAT DO YOU WANT TO KNOW?

How does UAIR prepare this data?

Is there a way to see which students are retained year after year or which drop out?

What is census data used for?
What is it not used for?

How can we compare retention rates between this year and previous years with S4S?

How do I navigate this data?

How do I look at demographic trends for campus?



START USING CENSUS DATA

STUDENT CENSUS

Admissions | Enrollment
Retention | Graduation
Demographics | More

Prepared by University
Analytics & Institutional
Research



FALL 2024

September 16, 2024



ARIZONA AT A GLANCE

FALL 2024

NEW UNDERGRADUATE STUDENTS

ENROLLMENT		
	Incoming First-Year	Transfer
Enrolled	9,314	2,584
FTE	8,934.67	1,961.33
Average SCH	14.26	11.07
FTE stands for full-time equivalent. FTE of the institution's part-time enrollment is estimated by multiplying all part-time students by 0.5. These are then added to the full-time enrollment headcounts to obtain an FTE for all students enrolled in the fall.		
ACADEMIC PROFILE		
	Incoming First-Year	Transfer
Average SAT	1234	1335
Average ACT	25	28
Average H.S. GPA	3.48	3.88
First-time students are evaluated.		
SEX		
	Incoming First-Year	Transfer
Male	40.1%	54.0%
Female	59.9%	45.0%
INCLUSIVE RACE/ETHNICITY*		
	Incoming First-Year	Transfer
American Indian or Alaska Native	3.8%	6.0%
Asian	10.0%	7.2%
Black or African American	8.2%	12.3%
Hispanic or Latino	30.2%	35.9%
Native Hawaiian or Other Pacific Islander	1.1%	1.5%
White	70.3%	61.2%
*Students are counted in every race/ethnicity group in which they have self-identified in University Student Census. Therefore, the total percentage will exceed 100%.		
AGE		
	Incoming First-Year	Transfer
Average Age	18	25
COMMITMENT TO ACCESS		
	Incoming First-Year	Transfer
First Generation	27.8%	48.7%
Pell Recipient	30.3%	42.5%
Age 25+	1.8%	40.4%
The Pell Recipient calculation excludes international and other students eligible to apply for Federal financial aid. This percentage is different from the Pell Granting.		
*This year's record-breaking enrollment and application numbers are a testament to the hard work of our enrollment team and the unwavering support from our campus partners. We've seen tremendous growth not only in the number of applications but also in the diversity of our incoming class. Programs like Arizona Road Trip have been instrumental in connecting with students across the state, and we're thrilled to see more students from all corners of Arizona choosing the University of Arizona. Our commitment remains strong—to provide an inclusive, world-class education to every student who joins our "Wildcat family."		
—Karey Ugazovic, Esq. Chief Enrollment Officer Vice President, Enrollment Management Dean, Undergraduate Admissions		
GEOGRAPHIC ORIGIN		
	Incoming First-Year	Transfer
Arizona Resident	52.7%	47.9%
Arizona Resident (excl. AZ Online)	54.1%	71.0%
Non-Resident	44.0%	50.1%
International	3.3%	1.9%
States & Territories Represented	57	
Countries Represented	102	
TRANSFER STUDENT PROFILE		
	Incoming First-Year	Transfer
Arizona Institutions		
Pima Community College	21.0%	
Maricopa CC System	8.5%	
Four-year Institutions	7.7%	
Out-of-state Institutions		
Community Colleges	23.6%	
Four-year Institutions	31.6%	
TOP ACADEMIC PLANS		
	Incoming First-Year	Transfer
Business Management	22.4%	
No Major Selected - A Center	7.5%	
No Major Selected - Engineering	7.1%	
Pre-Nursing	4.6%	
Medicine	4.5%	
TRANSFER		
Cyber Operations	8.0%	
Business Management	7.9%	
Business Administration	6.7%	
Psychology	5.6%	
Applied Computing	5.6%	
ADMISSIONS JOURNEY		
	First-Year	Transfer
Applied	58,339	9,583
Admitted	50,252	6,183
SCHOLARS		
	First-Year	Transfer
Finn Scholars	11	
National Merit Scholars	43	
National Merit Hispanic Scholars	36	
National Merit Indigenous Scholars	209	
National Merit Rural and Small Town Scholars	72	

ARIZONA INTERNATIONAL

This year, the University of Arizona welcomes students from a record-breaking 141 countries, making this class the most globally diverse student body in the institution's history. With a **28% increase in total international enrollment** across all campuses and modalities, bringing the **extended international student population to 7,247**, the university's global reach continues to expand, demonstrating its commitment to providing diverse, high-quality education to students worldwide.

International enrollment on our main campus has held steady compared to last year, with our graduate programs continuing to attract increasing interest. This is reflected in the **10% year-over-year growth in international graduate student enrollment**. The microcampus network witnessed the largest year-over-year enrollment growth in its history. This brings the total number of microcampus students to 2,330* across 15 partner campuses, demonstrating strong demand for the microcampus model.

*This number does not include a full count of students expected to be enrolled on the Global Microcampus Network by the end of the Fall 2024 term.



2024 U.S. NEWS & WORLD REPORT
BEST COLLEGES
Overall Rank - National Universities 109
Top Public School Rank 52

RECORD ENROLLMENT

The U of A received **58,339** first-year student applications this year, the most in its history, reflecting a 3% increase from last year and a 12% increase since 2022. This year's **first-year enrollment** is 5% higher than in 2022 and 10% higher than 2021. Notably, there was an almost 10% increase in enrollment from Coconino County, a 67% increase from Yavapai County, and a 2% increase from both Maricopa and Pima counties. The incoming class is the most diverse in the university's history, with **50% of students identifying as ethnicities other than white** (up from 49% last year). Hispanic/Latino students saw a 7% increase, while Native Hawaiian/Pacific Islander students increased by 20%. Additionally, 28% of the incoming class self-identify as first-generation college students.

The Arizona Road Trip program, aimed at first- and second-year Arizona high school students, involved over 2,500 participants from 35 high schools in 2023. This program has shown strong results, with the university reporting significant enrollment growth from schools across the state. In Tucson, enrollment from Ironwood Ridge High School and Sonoran Science Academy grew by 41%, while Salpointe Catholic High School saw a 28% increase and Sunnyside High School an 14% increase. Outside Tucson, first-year enrollment surged by 68% from Canyon View High School in Waddell and by 58% from Cactus Shadows High School in Cave Creek.

With an average unweighted high school GPA of 3.48, 11 Film Scholars—the most of any university in the state—and over 1,250 new students joining the W.A. Franke Honors College, this year's incoming class is academically prepared for success.

*Figures include all enrolled students, including international students, as well as those who have not self-identified their race/ethnicity.



University Analytics
& Institutional Research

START USING CENSUS DATA

Updated Interactive Fact Book

Publicly available on uair.arizona.edu

Census Dashboards

Available in UAccess Analytics, BI_SA_Medium required



FALL CENSUS OVERVIEW

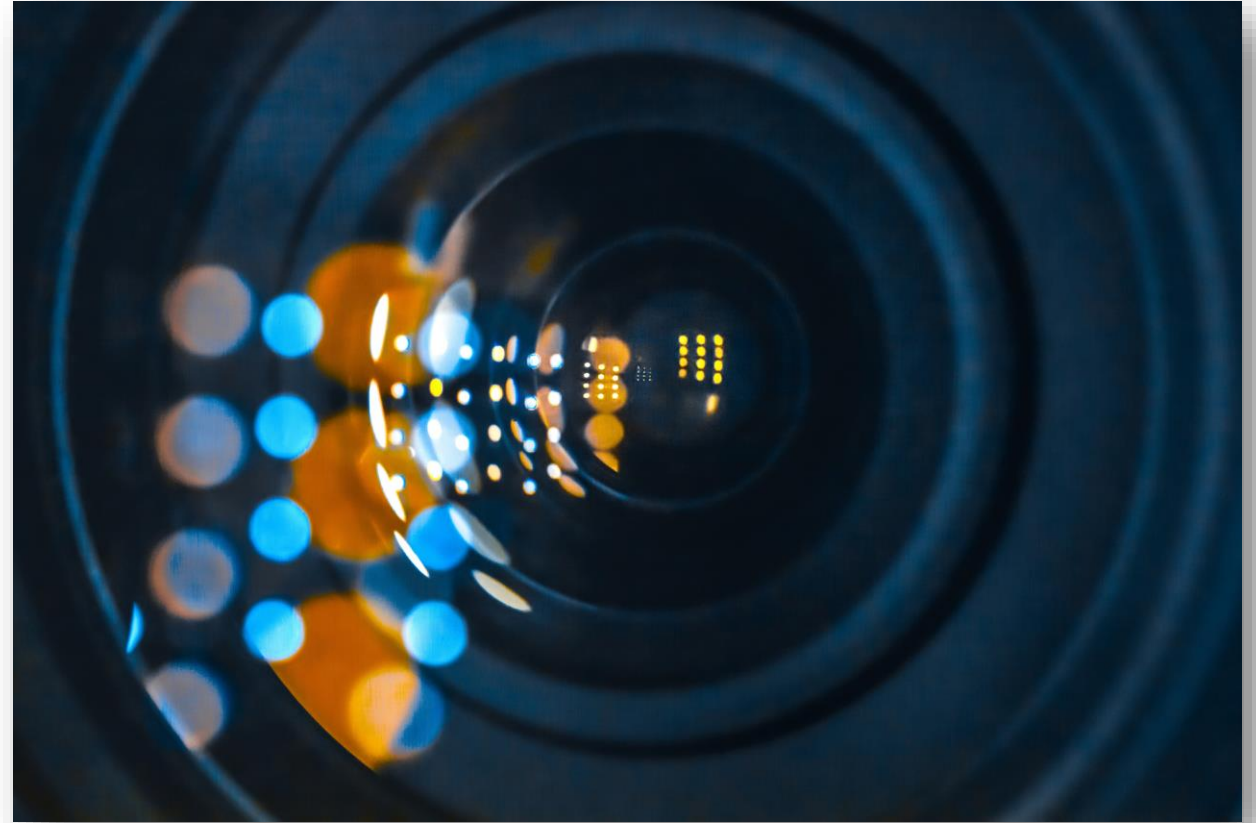
WHAT IS THE FALL CENSUS REPORT?

A document which captures student admissions, enrollment, retention, and graduation data for external reporting purposes and for internal reporting requirements as of the 21st day of the fall semester.



WHAT IS SNAPSHOT DATA?

- A snapshot is a Point-in-time (PIT) capture of the state of the data
- Several snapshots are collected throughout the year



HISTORY

- Previously, fall census data was available months after census day
- U of A now leads the way
 - Census data is available in a week
 - Census dashboards on-demand



CENSUS AT WORK

- True collaboration between UAIR team and several partners
- Census took place September 16, 2024
- Snapshot data is available now



WHERE IS THE DATA?

- [UAIR Website](#)
- [Census Report](#)
- [Arizona-At-A-Glance](#)
- [UAccess Analytics](#)



FALL CENSUS HIGHLIGHTS



FIRST YEAR

Main

8,928 Enrolled

↑ 1.3% from 2023

Online

304 Enrolled

TRANSFER

Main

1,233 Enrolled

Online

1,209 Enrolled



FIRST YEAR, MAIN CAMPUS

Arizona
Resident

↑ *1.0% from 2023*

Domestic Non-
Resident

↑ *4.2% from 2023*

Hispanic or Latinx
(Legacy IPEDS)

↑ *6.7% from 2023*

Native Hawaiian or
Other Pacific Islander
(Legacy IPEDS)

↑ *34.7% from 2023*

FIRST-YEAR, MAIN CAMPUS

Top Feeder States



Washington

401

Colorado

370

California

1,083

Illinois

243

Texas

249





TRANSFER, MAIN CAMPUS

Black or
African
American
(Legacy IPEDS)



13.8% from 2023

Male
Students of
Color
(Legacy IPEDS)



12.3% from 2023

Yavapai
College



58.3% from 2023



THE UNIVERSITY
OF ARIZONA

ARIZONA ONLINE

Noteworthy States



Oregon
7.9%



Utah
18.5%



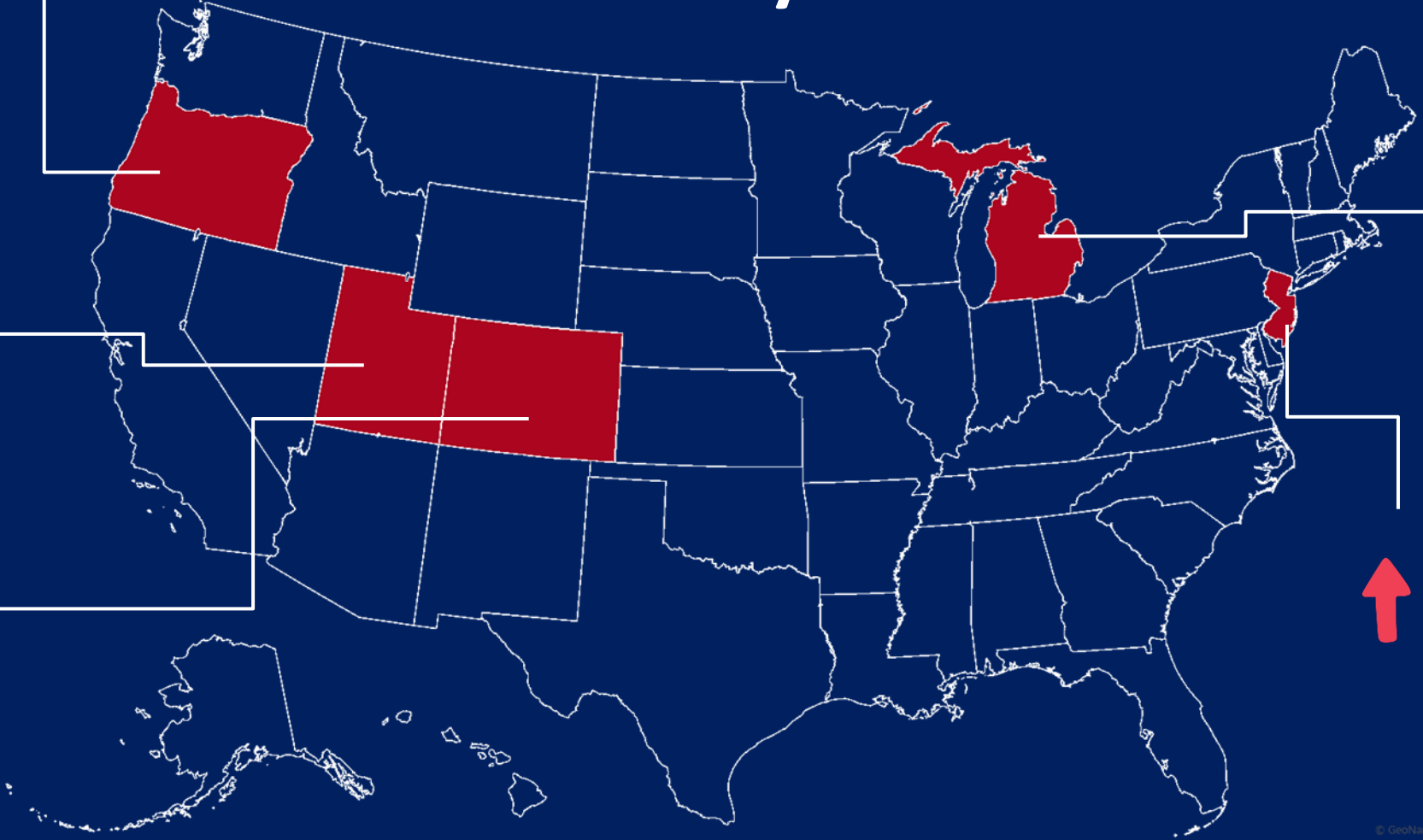
Colorado
14.6%



Michigan
18.5%



New Jersey
9.2%



Core GPA Range	Resident Wildcat Awards	Non-Resident Arizona Awards
4.0	\$12,500	\$32,000*
3.90 - 3.999	\$10,000	\$30,000*
3.75-3.899	\$8,000	\$20,000
3.50 - 3.749	\$5,000	\$12,500
3.25 - 3.499	\$3,000	\$7,500
3.0 - 3.249	\$2,000	\$2,500
2.75 - 2.999	\$750	\$1,000

FALL 2024

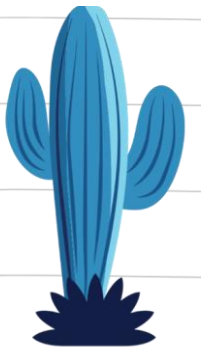
Merit Tuition Awards

*Non-Resident admits who were offered the Arizona Distinction Award had to commit by May 1, 2024

TYPE OF AWARD	CORE UNWEIGHTED GPA RANGE	RESIDENT ARIZONA AWARD*
WILDCAT DISTINCTION AWARD	4.00	\$11,000
WILDCAT EXCELLENCE AWARD	3.75 - 3.999	\$8,000
	3.50 - 3.749	\$5,000
	3.25 - 3.499	\$3,000
	3.00 - 3.249	\$2,000

FALL 2025

AZ Resident Merit Tuition Awards



TYPE OF AWARD	CORE UNWEIGHTED GPA RANGE	NON-RESIDENT AWARD*
ARIZONA DISTINCTION AWARD	3.9 - 4.00	\$20,000
ARIZONA EXCELLENCE AWARD	3.75 - 3.899	\$16,000
	3.50 - 3.749	\$12,500
	3.25 - 3.499	\$7,500
	3.00 - 3.249	\$4,000

FALL 2025

Domestic Non-Resident Merit Tuition Awards

For, non-resident students, maximum scholarship consideration, pending availability of funds, is given to applicants who apply by the priority date of

December 2, 2024.

DASHBOARD TOUR

FALL CENSUS DASHBOARD

The screenshot shows the 'UAccessAnalytics Fall Census' dashboard. The top navigation bar includes 'UAccessAnalytics', 'Fall Census', and various user options like 'Alerts', 'Home', 'My Roles', 'Visualizer', 'Catalog', 'Favorites', 'Dashboards', 'Create', and 'Open'. Below this is a sub-navigation bar with 'Overview' (selected), 'Undergraduate Admissions Funnel', 'Enrollment', 'County/State/Country', 'Transfer Institution', 'Retention and Graduation', and 'Reference Guide'. The main heading is 'Fall Census Data | Overview'. A welcome message states: 'Welcome to the Fall Census Data Dashboard! This dashboard is intended to compliment the official [Fall Census report](#).' The dashboard is divided into two main sections. The left section, 'Dashboard Page Description', contains a list of dashboard components: 'Undergraduate Admissions Funnel' (expanded), 'Enrollment', 'County/State/Country', and 'Transfer Institution'. The 'Undergraduate Admissions Funnel' description reads: 'This dashboard allows exploration of fall census data at a finer grain of detail by summarizing undergraduate admission information by Admit Cycle Term Description, Admit Type Description, Residency, Full Time / Part Time, Sex, Campus, Location, College, IPEDS Race/Ethnicity, Academic (Major) Plan Description, Honors Admit, Pell Recipient Flag and Legacy IPEDS Race/Ethnicity. Counts are by primary academic plan.' The right section, 'We want to hear from you', asks for feedback and provides contact information for UAIR: Website (<https://uair.arizona.edu/>), Email (uair-student-data@list.arizona.edu), Phone ((520) 621-3030), and Feedback Forum ([UAccess Community](#)). Below this is a 'Resources' section with links for 'Interested in learning more about Fall Census Data?' (Data Exploration Series, PDF Video), 'Arizona at a Glance', and 'Fall Census Report'.

UAccessAnalytics Fall Census

Alerts Home My Roles Visualizer Catalog Favorites Dashboards Create Open

Overview Undergraduate Admissions Funnel Enrollment County/State/Country Transfer Institution Retention and Graduation Reference Guide

Fall Census Data | Overview

Welcome to the Fall Census Data Dashboard! This dashboard is intended to compliment the official [Fall Census report](#).

Dashboard Page Description

Undergraduate Admissions Funnel

Undergraduate Admissions Funnel

This dashboard allows exploration of fall census data at a finer grain of detail by summarizing undergraduate admission information by Admit Cycle Term Description, Admit Type Description, Residency, Full Time / Part Time, Sex, Campus, Location, College, IPEDS Race/Ethnicity, Academic (Major) Plan Description, Honors Admit, Pell Recipient Flag and Legacy IPEDS Race/Ethnicity. Counts are by primary academic plan.

Enrollment

County/State/Country

Transfer Institution

We want to hear from you

Do you have a question about this dashboard or any suggestions for improvements?

Contact UAIR at:

Website: <https://uair.arizona.edu/>
Email: uair-student-data@list.arizona.edu
Phone: (520) 621-3030
Feedback Forum: [UAccess Community](#)

Resources

Interested in learning more about Fall Census Data?

Data Exploration Series | Focus on Student Counts and Census Data [PDF Video](#)

[Arizona at a Glance](#)

[Fall Census Report](#)

Location:
Dashboards->Student->Fall
Census

Overview page contains
descriptions, contact info,
links to Fall Census report, and
more

UNDERGRADUATE ADMISSIONS FUNNEL

- Displays first-year student headcounts through fall undergraduate admissions funnel
 - Applicants
 - Admits
 - Enrollment fee
 - Orientation
 - Housing
 - Yield
- Breakout sections for campus, residency, sex, first generation, Inclusive Race/Ethnicity, IPEDS Race/Ethnicity, and Legacy IPEDS Race/Ethnicity
- Defaults to current admit term and first-year undergraduate students
- Prompts can be used to get to a finer grain of data
- Switch between headcounts and percentages



UNDERGRADUATE ADMISSIONS FUNNEL

Undergraduate Admissions Funnel: First-Year Undergraduates |

This report counts the number of students through phases of UArizona's Fall Undergraduate Admissions Funnel. Arizona Online students, typically, do not pay the enrollment fee, attend orientation, or apply for housing. This report will always display three consecutive fall terms. If you are interested in the admission funnel for graduate students, please see the Graduate Student Admission Funnel.

Admit Cycle Term Description
Fall 2023

Admit Type Description
First-Year Undergraduates

Campus
--Select Value--

College
--Select Value--

Academic (Major) Plan Description
--Select Value--

IPEDS Race/Ethnicity
--Select Value--

Legacy IPEDS Race/Ethnicity
--Select Value--

Location
--Select Value--

Sex
--Select Value--

Full Time / Part Time
--Select Value--

Residency
--Select Value--

Honors Admit
--Select Value--

Pell Recipient Flag
--Select Value--

Apply Reset

View the data by: Campus Counts

Campus	Admit Term	Applicants	Admits	Enrollment Fee	Orientation	Housing	Yield
Main	Fall 2021	46,062	41,308	8,978	8,658	5,485	8,376
	Fall 2022	49,830	44,311	9,600	9,164	5,792	8,883
	Fall 2023	54,035	47,477	9,404	9,154	5,771	8,811
Arizona Online	Fall 2021	1,722	506	17	17	2	208
	Fall 2022	1,870	785	24	18	7	319
	Fall 2023	1,996	866	14	13	2	384
Distance	Fall 2021	7	0	0	0	0	0
	Fall 2022	10	4	0	0	0	2
	Fall 2023	7	0	0	0	0	0
Sierra Vista	Fall 2022	1	0	0	0	0	0
Arizona International	Fall 2021	142	55	0	0	1	1
	Fall 2022	12	1	0	0	0	1
	Fall 2023	3	0	0	0	0	0
Arizona International Direct	Fall 2021	269	127	5	3	0	37
	Fall 2022	390	94	5	1	0	16
	Fall 2023	425	26	1	1	0	12

View the data by: Campus Percentage

Admit Term	Campus	Applicants	Admits	Enrollment Fee	Orientation	Housing	Yield
Fall 2021	Main	95.6%	98.4%	99.8%	99.8%	99.9%	97.1%
	Arizona Online	3.6%	1.2%	0.2%	0.2%	0.0%	2.4%
	Distance	0.0%	0.0%	0.0%	0.0%	0.0%	0.0%
	Arizona International	0.3%	0.1%	0.0%	0.0%	0.0%	0.0%
	Arizona International Direct	0.6%	0.3%	0.1%	0.0%	0.0%	0.4%
Fall 2022	Main	95.6%	98.0%	99.7%	99.8%	99.9%	96.3%
	Arizona Online	3.6%	1.7%	0.2%	0.2%	0.1%	3.5%
	Distance	0.0%	0.0%	0.0%	0.0%	0.0%	0.0%
	Sierra Vista	0.0%	0.0%	0.0%	0.0%	0.0%	0.0%
	Arizona International	0.0%	0.0%	0.0%	0.0%	0.0%	0.0%
Fall 2023	Main	95.7%	98.2%	99.8%	99.8%	100.0%	95.7%
	Arizona Online	3.5%	1.8%	0.1%	0.1%	0.0%	4.2%
	Distance	0.0%	0.0%	0.0%	0.0%	0.0%	0.0%
	Arizona International	0.0%	0.0%	0.0%	0.0%	0.0%	0.0%
	Arizona International Direct	0.8%	0.1%	0.0%	0.0%	0.0%	0.1%



ENROLLMENT

- Displays enrolled student headcounts
- Headcounts are broken down by residency status
- Breakout sections include, campus, academic career, sex, Inclusive Race/Ethnicity, IPEDS Race/Ethnicity, and Legacy IPEDS Race/Ethnicity
- Enable hidden columns to see full time/part time breakdowns
- Switch between headcounts and percentages
- Review prompt selections to get your desired grain of data



ENROLLMENT

Fall Census | Enrollment

This dashboard displays a unique headcount of enrolled students by residency. This report will always display three consecutive fall terms.

Term

[2234] Fall 2023

Academic Program Campus

--Select Value--

IPEDS Race/Ethnicity

--Select Value--

First Generation Flag

--Select Value--

IPEDS Cohort

--Select Value--

College

--Select Value--

Legacy IPEDS Race/Ethnicity

--Select Value--

Sex

--Select Value--

Academic Career

--Select Value--

Academic Plan

--Select Value--

UA Full Time Part Time

--Select Value--

Academic Program Location

--Select Value--

Next

Apply

Reset

Campus

View the data by: Campus Counts

Academic Program Campus	Term	Resident	Non-resident	International	Total
Main	Fall 2021	23,324	12,692	3,097	39,113
	Fall 2022	22,725	13,412	3,469	39,606
	Fall 2023	23,118	13,820	3,595	40,533
Arizona Online	Fall 2021	2,058	6,267		8,325
	Fall 2022	1,816	6,267		8,083
	Fall 2023	1,658	7,473		9,131
Phoenix	Fall 2021	580	173		753
	Fall 2022	596	162		758
	Fall 2023	635	189		824
Distance	Fall 2021	510	153	7	670
	Fall 2022	502	148	2	652
	Fall 2023	412	144	2	558
Sierra Vista	Fall 2021	280	3	1	284
	Fall 2022	211	3		214
	Fall 2023	158	1		159
Arizona International	Fall 2021		1,120		1,120
	Fall 2022		1,642	2	1,644
	Fall 2023		1,826	5	1,831
Arizona International Direct	Fall 2021		169	1	170

Reporting Residency

Sort Column

Exclude column

Include column

Move Column

IPEDS Cohort at Census

UA Full Time Part Time

Total

Academic Career

Academic Plan Code - Description

College Code - Description

Race/Ethnicity

Gender

IPEDS Race/Ethnicity



ENROLLMENT BY COUNTY/STATE/COUNTRY

- Displays enrollment headcount for first-year undergraduate main campus students
- Enrollment by Arizona county, US state, and citizenship country
- For student origin data of the entire undergraduate population, click link for *Undergraduate Enrollment by Geographic Origin*



ENROLLMENT BY COUNTY/STATE/COUNTRY

Fall Census | Incoming First-Year Undergraduate Cohort

This report counts the number of first-year undergraduate main campus students enrolled by Arizona county, high school state and citizenship country. This report will always display three consecutive fall terms. If you are interested in student origin for the entire undergraduate population, please see [Undergraduate Enrollment by Geographic Origin](#).

Term

[2234] Fall 2023

College

--Select Value--

Academic Plan

--Select Value--

IPEDS Race/Ethnicity

--Select Value--

Legacy IPEDS Race/Ethnicity

--Select Value--

Academic Program Location

--Select Value--

UA Full Time Part Time

--Select Value--

First Generation Flag

--Select Value--

Honors Activated Flag

--Select Value--

Sex

--Select Value--

Ever Undergraduate Res Life Flag

--Select Value--

Apply

Reset

Enrollment by Arizona County

Arizona County¹	Fall 2021	Fall 2022	Fall 2023
Apache	9	11	21
Cochise	94	65	72
Coconino	83	76	85
Gila	13	6	15

Enrollment by State

High School State	Fall 2021	Fall 2022	Fall 2023
Alabama	5	11	9
Alaska	16	26	24
American Samoa	5	1	1
Arizona	4,180	4,243	4,557

High School State	Fall 2021	Fall 2022	Fall 2023
Mississippi	6	4	6
Missouri	58	53	55
Montana	23	26	27
Nebraska	32	40	29

Enrollment by Country

Country¹	Fall 2021	Fall 2022	Fall 2023
Afghanistan	0	1	0
Angola	0	2	1
Argentina	0	1	1
Australia	0	3	2

Country¹	Fall 2021	Fall 2022	Fall 2023
Kuwait	32	23	25
Kyrgyzstan	0	0	2
Lebanon	1	0	0
Liberia	1	0	0



ENROLLMENT BY TRANSFER INSTITUTION

- Headcount of enrolled transfer students
- Broken out by Arizona transfer institutions, community colleges and four-year institutions
 - Community colleges - Totals for Maricopa county colleges and other Arizona community colleges
 - Four-year institutions – ASU, NAU, and other Arizona institutions
- Out of state transfer institutions
 - Community colleges/other
 - Four-year institutions
- Total transfers
 - AZ transfer institutions
 - Out of state transfer institutions
 - Graph – bars represent total transfers, darker blue represents AZ transfers, lighter blue displays out of state transfers



ENROLLMENT BY TRANSFER INSTITUTION

Fall Census | Enrollment by Transfer Institution

This dashboard counts the number of transfer students enrolled, broken out by Arizona transfer institution, out of state transfer institution, and total transfers. This report will always display 10 consecutive fall terms.

Term	[2234] Fall 2023	IPEDS Race/Ethnicity	--Select Value--	First Generation Flag	--Select Value--
Academic Program Campus	--Select Value--	Legacy IPEDS Race/Ethnicity	--Select Value--	Honors Activated Flag	--Select Value--
College	--Select Value--	Academic Program Location	--Select Value--	Ever Undergraduate Res Life Flag	--Select Value--
Academic Plan	--Select Value--	UA Full Time Part Time	--Select Value--	Sex	--Select Value--
Apply Reset					

Arizona Transfer Institutions¹

Community Colleges

College	Fall 2014	Fall 2015	Fall 2016	Fall 2017	Fall 2018	Fall 2019	Fall 2020	Fall 2021	Fall 2022	Fall 2023
Maricopa Community Colleges Total	240	264	264	213	236	225	259	261	234	242
Chandler-Gilbert Community Col	30	32	37	34	36	33	39	44	33	38
Estrella Mountain Community Co	14	40	18	23	20	5	18	16	16	22
Gateway Community College	2	4	4	1	4	8	4	3	4	5
Glendale Community College	42	24	44	27	34	40	41	29	39	25
Mesa Community College	42	20	50	40	41	47	48	60	51	46
Paradise Valley Community Coll	33	56	42	27	40	19	26	24	13	23
Phoenix College	15	12	15	18	12	19	25	13	15	22
Rio Salado College	14	31	30	14	23	24	35	43	36	33
Scottsdale Community College	36	30	20	21	19	26	18	22	21	19
South Mountain Community Col	12	15	8	8	7	4	5	7	6	9
Other Arizona Community Colleges Total	1,054	1,003	1,052	1,079	1,019	1,091	999	793	779	820
Arizona Western College	83	83	74	86	87	92	65	67	58	67
Carrington College - Phoenix								1		
Carrington College - Tucson						2	2		1	
Central Arizona College	30	17	37	31	39	32	18	20	15	24
Cochise College	85	63	100	91	103	108	131	95	97	88
Coconino Community College	3	12	7	6	5	10	9	8	5	15
Diné College		4	2	6	3		3	2	3	4
Eastern Arizona College	10	17	16	21	14	24	18	10	15	11
Mohave Community College	2	4	4	7	3	4	5	9	6	6
Northland Pioneer College	5	8	3	7	3	10	5	3	7	5
Pima Community College	520	700	780	808	737	791	724	563	545	573
Tohono O'odham Community Colle	2	3		3	1	4	6	2	6	13
Yavapai College	14	12	13	13	24	14	15	13	18	13
Grand Total	1,294	1,267	1,336	1,292	1,255	1,316	1,258	1,054	1,013	1,062

Four-Year Institutions

College	Term	Fall 2014	Fall 2015	Fall 2016	Fall 2017	Fall 2018	Fall 2019	Fall 2020	Fall 2021	Fall 2022	Fall 2023
Arizona State University		25	17	40	41	45	54	54	51	60	63
Northern Arizona University		31	24	28	37	52	52	41	44	38	53
Other Arizona Institutions		15	19	29	23	29	47	37	41	46	57
Grand Total		71	60	97	101	126	153	132	136	144	173



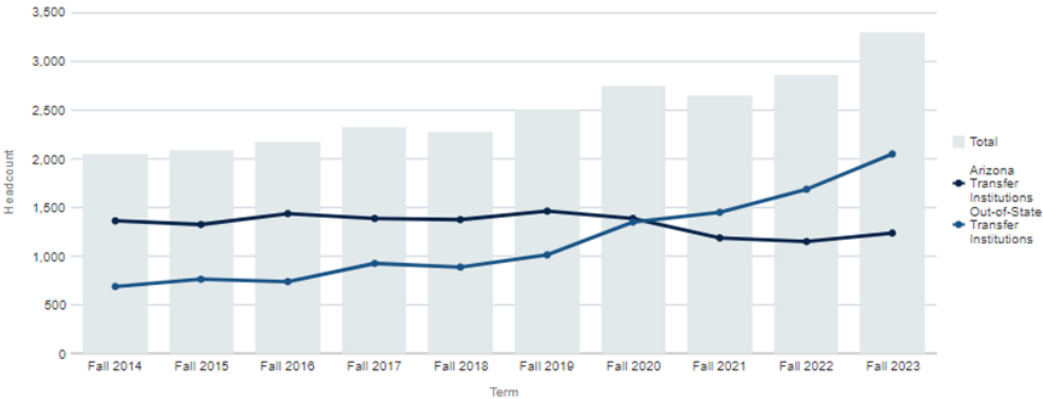
ENROLLMENT BY TRANSFER INSTITUTION

Enrollment by Transfer Institution | New Undergraduate Transfer Cohort

Out-of-State Transfer Institutions¹

Last Transfer Institution Type	Fall 2014	Fall 2015	Fall 2016	Fall 2017	Fall 2018	Fall 2019	Fall 2020	Fall 2021	Fall 2022	Fall 2023
Community Colleges/Other	306	322	328	386	400	494	684	709	795	878
Four-Year Institutions	378	436	414	538	487	524	665	740	896	1,172
Grand Total	684	758	742	924	887	1,018	1,349	1,449	1,691	2,050

Total Transfers¹



State	Fall 2014	Fall 2015	Fall 2016	Fall 2017	Fall 2018	Fall 2019	Fall 2020	Fall 2021	Fall 2022	Fall 2023
Arizona Transfer Institutions	1,365	1,327	1,433	1,393	1,381	1,469	1,390	1,190	1,157	1,235
Out-of-State Transfer Institutions	684	758	742	924	887	1,018	1,349	1,449	1,691	2,050
Grand Total	2,049	2,085	2,175	2,317	2,268	2,487	2,739	2,639	2,848	3,285

¹ Students' last transfer institution is represented.



RETENTION & GRADUATION

- This page redirects to Retention & Graduation dashboards
- Subpages include first-time first-year, transfer in students, and cohort analysis
- Overall Trends display 1-year retention and 6-year graduation metric
- Graph displays cohort trends of 1-year retention, 4-year graduationn and 6-year graduation
- Defaults to the last 10 fall terms
- Filter for desired student group with prompts on the left



RETENTION & GRADUATION

Retention & Graduation | First-Time First-Year Students

Overall Trends

1-Year Retention Rates

The University of Arizona calculates official retention rates with first-time, full-time students in the fall cohort, as defined by IPEDS. The student must be enrolled on the 21st day of the subsequent fall semester to be counted as retained in the census file.

Fall 2018	Fall 2019	Fall 2020	Fall 2021	Fall 2022
83.2%	85.5%	84.0%	85.6%	87.7%

6-Year Graduation Rates

The University of Arizona calculates official graduation rates with first-time, full-time students in the fall cohort, as defined by IPEDS. Graduation rate cycles include every degree awarded prior to fall census date of the following year. The rates are cumulative-- i.e., the graduation rate for year 6 includes all degrees earned in years 1-6.

Fall 2013	Fall 2014	Fall 2015	Fall 2016	Fall 2017
64.7%	64.9%	64.3%	67.9%	65.9%

Cohort Trends

Filter for your group of students:

Cohort Term

Fall 2018; Fall 2017; Fall 2016; Fall

Academic Program Campus at Entry

--Select Value--

Academic Program Location at Entry

--Select Value--

College at Entry

--Select Value--

Plan Department at Entry

--Select Value--

Academic Plan at Entry

--Select Value--

IPEDS Full-Time Part-Time at Entry

F

IPEDS Ethnicity at Entry

--Select Value--

Legacy IPEDS Race/Ethnicity at Entry

--Select Value--

Gender at Entry

--Select Value--

IPEDS Residency at Entry

--Select Value--

Honors Flag at Entry

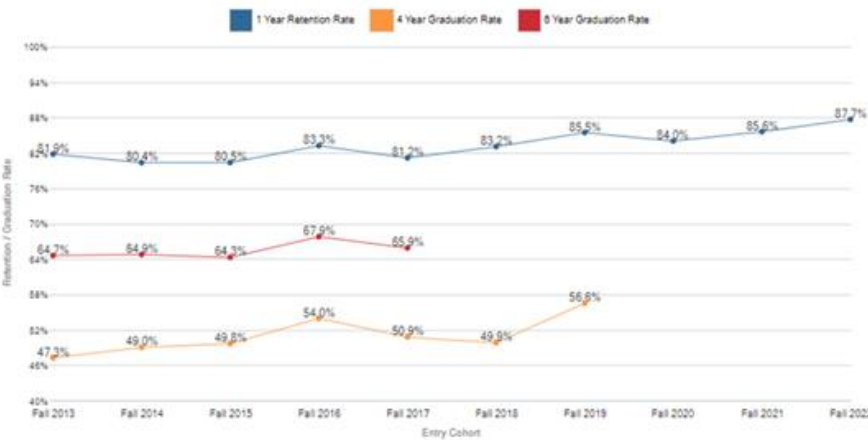
--Select Value--

First Generation Flag

--Select Value--

ABOR STEM Flag at Entry

--Select Value--



Entry Cohort	Headcount	1YR Retention Rate	2YR Retention Rate	3YR Retention Rate	4YR Graduation Rate	5YR Graduation Rate	6YR Graduation Rate
Fall 2013	6,266	81.9%	72.8%	67.8%	47.3%	61.4%	64.7%
Fall 2014	6,958	80.4%	72.3%	67.1%	49.0%	62.1%	64.9%
Fall 2015	6,961	80.5%	72.1%	66.4%	49.8%	61.6%	64.3%
Fall 2016	5,978	83.3%	74.4%	68.9%	54.0%	65.9%	67.9%
Fall 2017	5,875	81.2%	73.3%	67.7%	50.9%	62.0%	65.9%
Fall 2018	5,992	83.2%	74.5%	68.0%	49.9%	65.2%	
Fall 2019	6,017	85.5%	78.5%	71.1%	56.8%		
Fall 2020	5,359	84.0%	75.4%	68.7%			
Fall 2021	6,001	85.6%	78.1%				
Fall 2022	6,141	87.7%					

Analyze • Print • Export



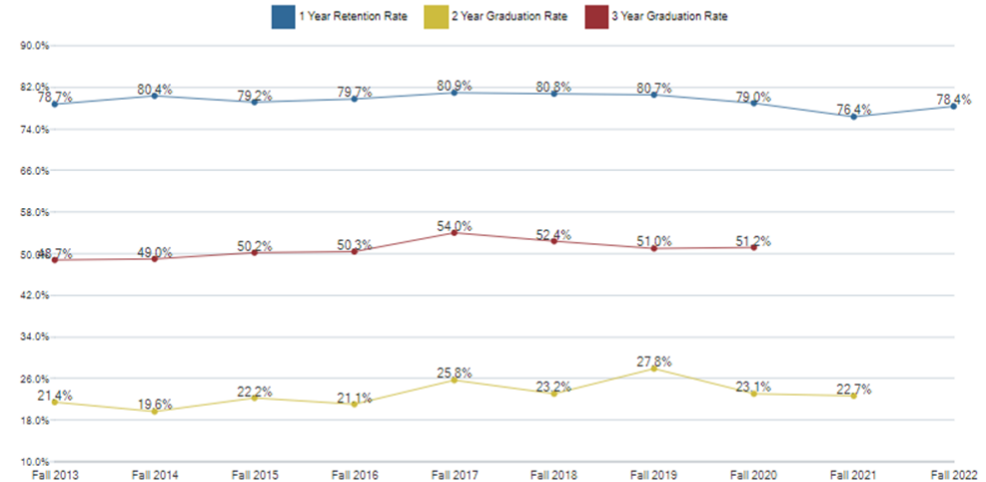
RETENTION & GRADUATION

Retention & Graduation | Transfer-In Students

Cohort Trends

Filter your group of students:

Cohort Term Fall 2021:Fall 201▼	Transfer Institution --Select Value--▼
Academic Program Campus at Entry --Select Value--▼	Transfer Institution 2-Year/4-Year --Select Value--▼
Academic Program Location at Entry --Select Value--▼	Transfer Institution Public/Private --Select Value--▼
College at Entry --Select Value--▼	Transfer Institution School Type --Select Value--▼
Plan Department at Entry --Select Value--▼	Transfer Institution State --Select Value--▼
Academic Plan at Entry --Select Value--▼	Student ID(s) --Select Value--▼
IPEDS Full-Time Part-Time at Entry F▼	
IPEDS Ethnicity at Entry --Select Value--▼	
Legacy IPEDS Race/Ethnicity at Entry --Select Value--▼	
Gender at Entry --Select Value--▼	
IPEDS Residency at Entry --Select Value--▼	
Honors Flag at Entry --Select Value--▼	
First Generation Flag --Select Value--▼	
ABOR STEM Flag at Entry	

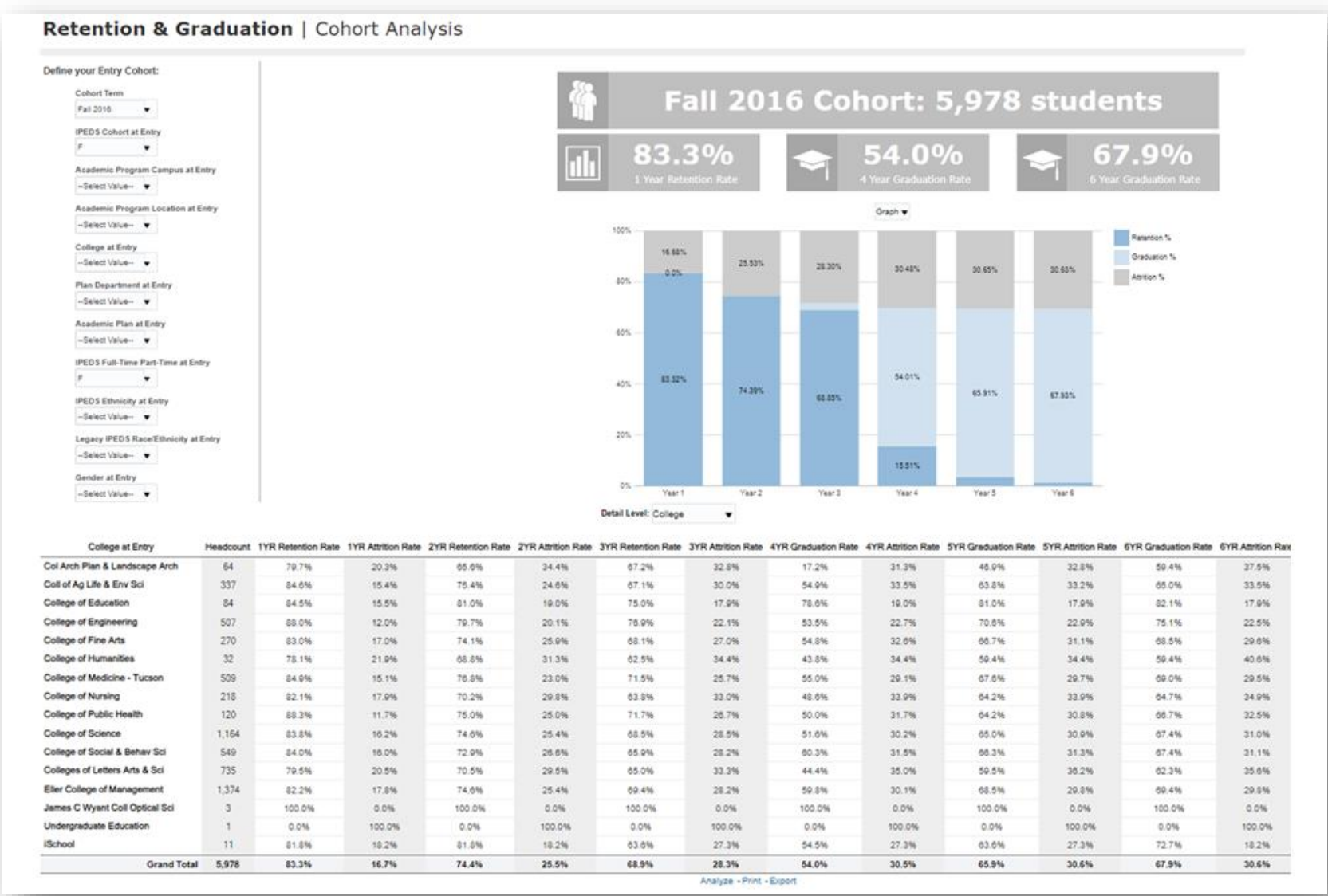


Entry Cohort	Headcount	1 YR Retention Rate	2 YR Retention Rate	3 YR Retention Rate	1 YR Graduation Rate	2 YR Graduation Rate	3 YR Graduation Rate
Fall 2013	1,549	78.7%	50.9%	20.1%	0.9%	21.4%	48.7%
Fall 2014	1,640	80.4%	52.7%	20.7%	1.0%	19.6%	49.0%
Fall 2015	1,641	79.2%	48.6%	18.1%	0.9%	22.2%	50.2%
Fall 2016	1,713	79.7%	50.7%	18.9%	0.6%	21.1%	50.3%
Fall 2017	1,732	80.9%	46.7%	14.4%	0.6%	25.8%	54.0%
Fall 2018	1,775	80.8%	51.4%	18.6%	0.8%	23.2%	52.4%
Fall 2019	1,783	80.7%	47.1%	17.8%	0.8%	27.8%	51.0%
Fall 2020	1,736	79.0%	42.2%	17.1%	0.9%	23.1%	51.2%
Fall 2021	1,760	76.4%	45.3%		0.4%	22.7%	
Fall 2022	1,739	78.4%			1.4%		

Analyze - Print - Export



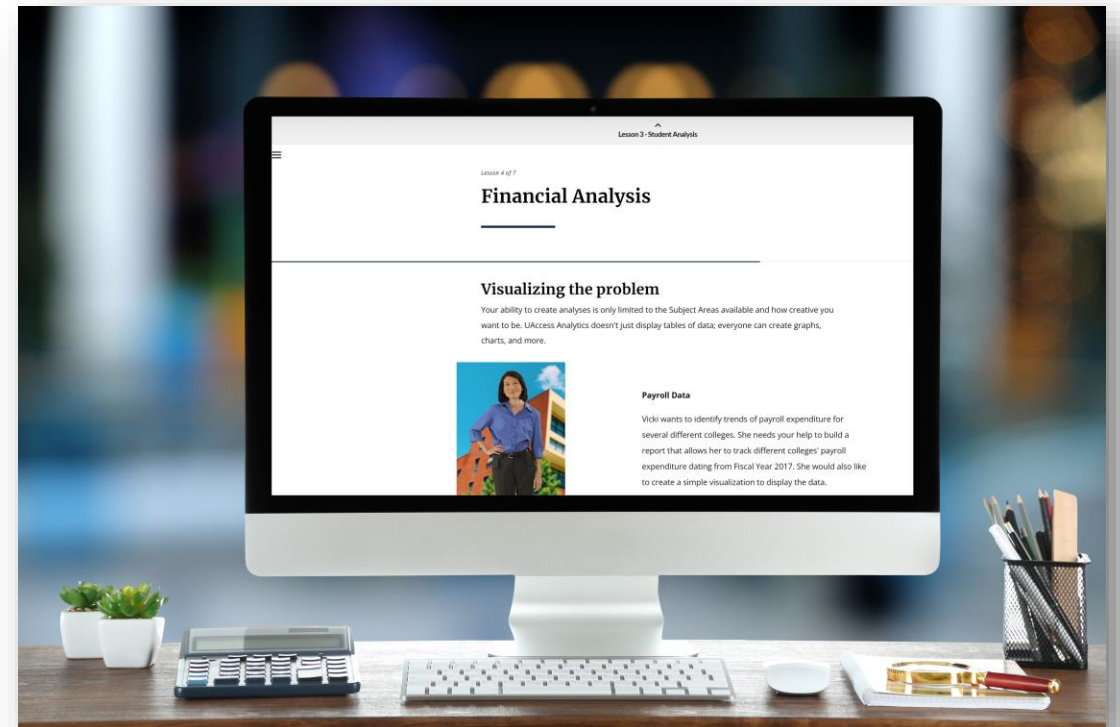
RETENTION & GRADUATION



QUESTIONS?

TRAINING & DATA LITERACY

- UAccess Analytics Certification in EDGE
- YouTube playlists
- Data Exploration Series highlighting important services
- One-on-one office hours
- External newsletter
- UAIR Support Hub



INSTITUTIONAL DATA SUMMIT



March 6th, 2025

- Look forward to a day of connection and collaboration, explore the University of Arizona through institutional data.
- Stay tuned for registration!
- Call for proposals now open!



University Analytics & Institutional Research

THANK YOU

